

# Quarterly Working-Age Benefit Numbers – December 2018

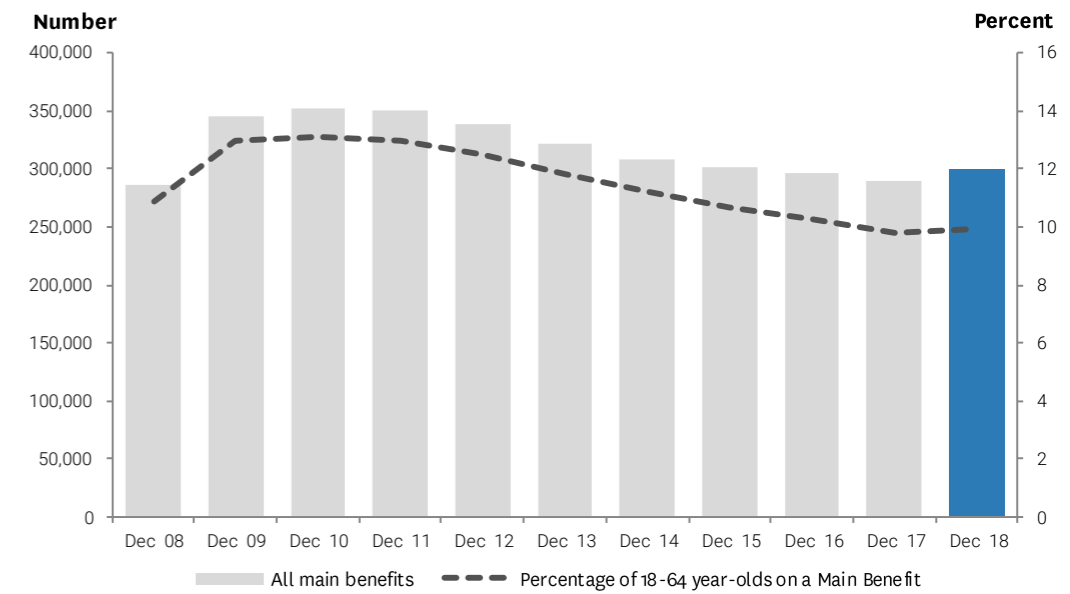
① Unless otherwise noted: quarterly numbers presented in this document are as at the end of the quarter and clients reported on are working-age (i.e. 18-64 years).



## Main benefit categories and sub-categories

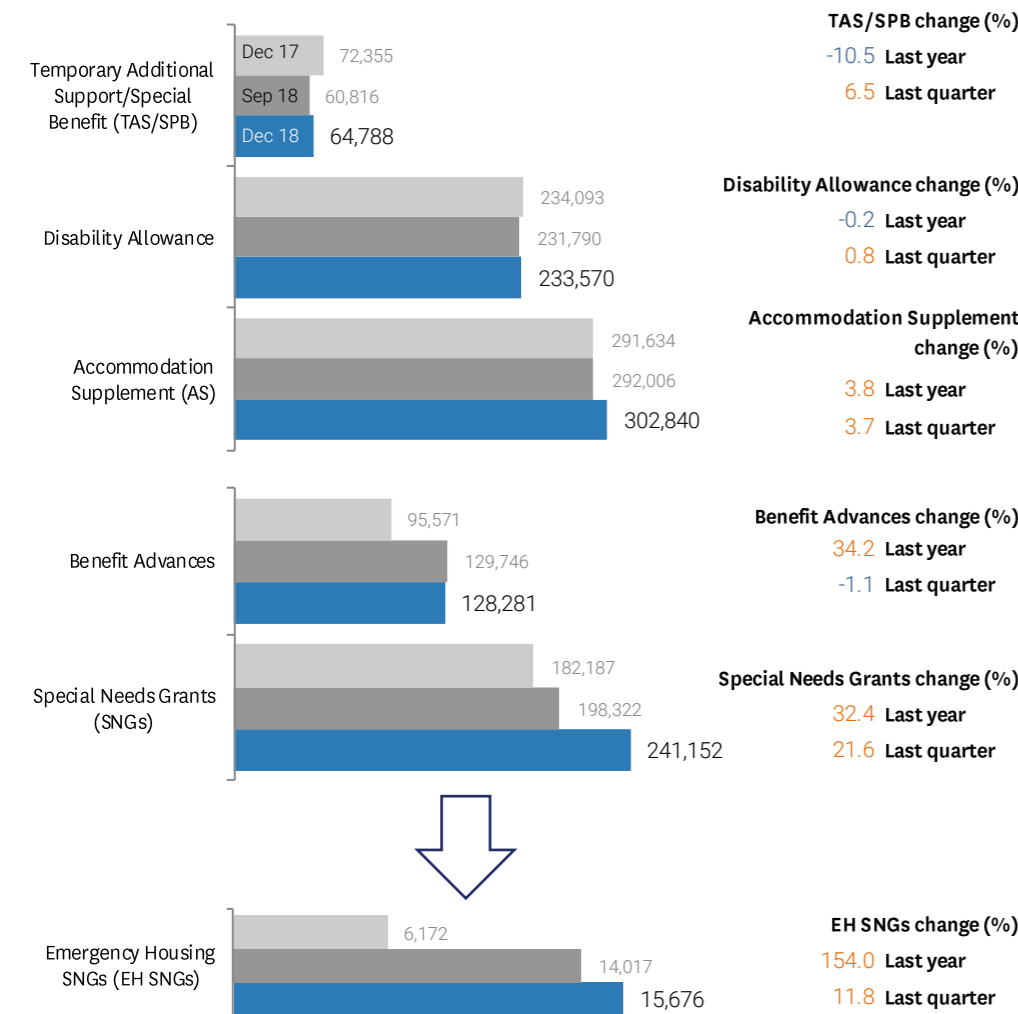
	Two-year Trend	Dec 17	Sep 18	Dec 18	Quarterly change		Year-on-year change	
					Number	Percent	Number	Percent
<b>All main benefits</b>		289,788	284,315	299,345	15,030	5.3 ▲	9,557	3.3 ▲
<b>Jobseeker Support (JS)</b>		123,041	129,643	134,048	4,405	3.4 ▲	11,007	8.9 ▲
Work Ready (JS - WR)		65,613	71,409	74,107	2,698	3.8 ▲	8,494	12.9 ▲
Health Condition or Disability (JS - HCD)		57,428	58,234	59,941	1,707	2.9 ▲	2,513	4.4 ▲
<b>Sole Parent Support (SPS)</b>		60,678	58,620	59,870	1,250	2.1 ▲	-808	-1.3 ▼
<b>Supported Living Payment (SLP)</b>		93,022	92,413	92,687	274	0.3 ▲	-335	-0.4 ▼
Health Condition or Disability (SLP - HCD)		84,273	83,828	84,059	231	0.3 ▲	-214	-0.3 ▼
Carers (SLP - Carers)		8,749	8,585	8,628	43	0.5 ▲	-121	-1.4 ▼
<b>Youth Payment/Young Parent Payment</b>		1,896	1,709	1,680	-29	-1.7 ▼	-216	-11.4 ▼
Youth Payment (YP)		321	288	271	-17	-5.9 ▼	-50	-15.6 ▼
Young Parent Payment (YPP)		1,575	1,421	1,409	-12	-0.8 ▼	-166	-10.5 ▼
<b>Other main benefits</b>		11,151	1,930	11,060	9,130	473.1 ▲	-91	-0.8 ▼

## Main benefits over time



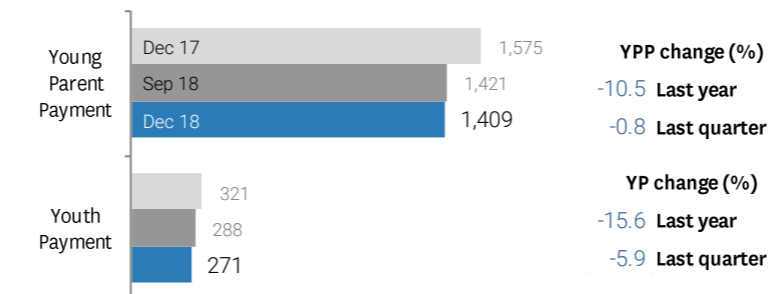
## Supplementary benefits and hardship assistance

① Supplementary and hardship assistance numbers include all recipients receiving the assistance shown, not only working-age clients. Benefit Advances and Special Needs Grants are the sum of grants over the three months of the quarter (i.e. they are not at the end of the quarter).

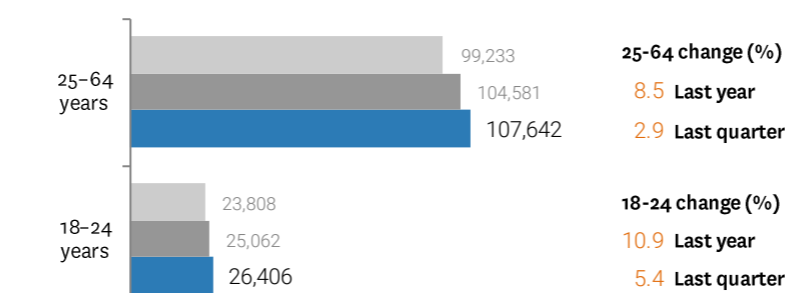


## Youth

### Youth Benefits (18 years and over)



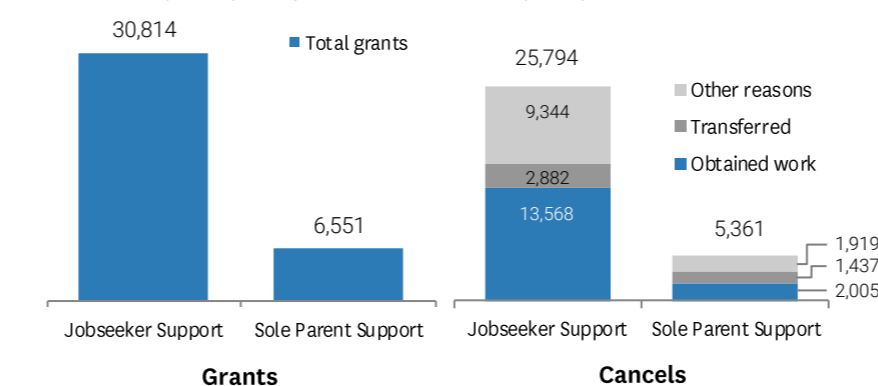
### Jobseeker Support by age-group



## Grants and cancellations of benefits

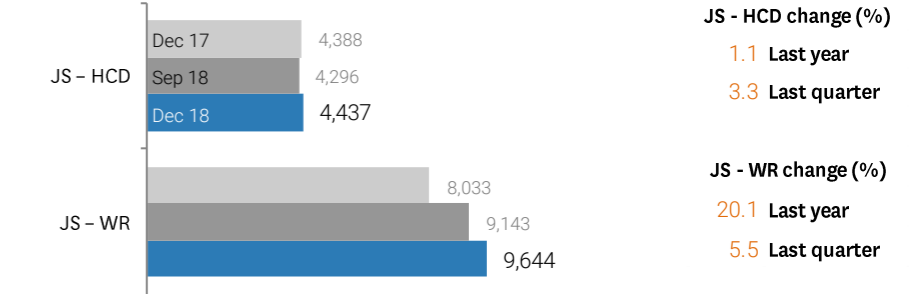
### Latest quarter

① Benefit grants and cancellations are the sum of grants and cancellations over the three months of the quarter (i.e. they are not at the end of the quarter)

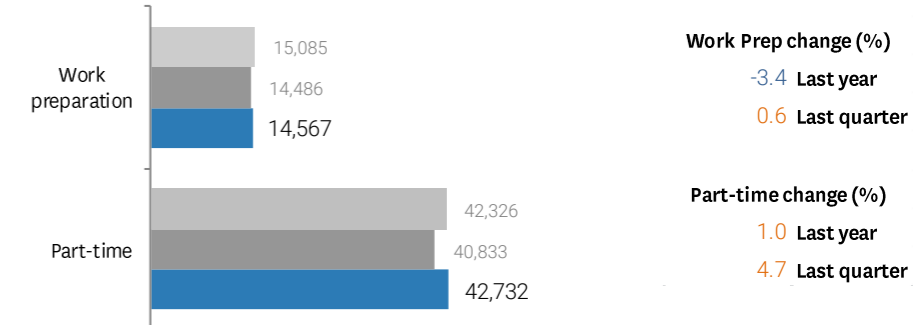


## Sole parents

### Sole parents receiving Jobseeker Support



### Sole Parent Support by work obligation



## Other main benefits

