

Quarterly Working-Age Benefit Numbers – September 2018

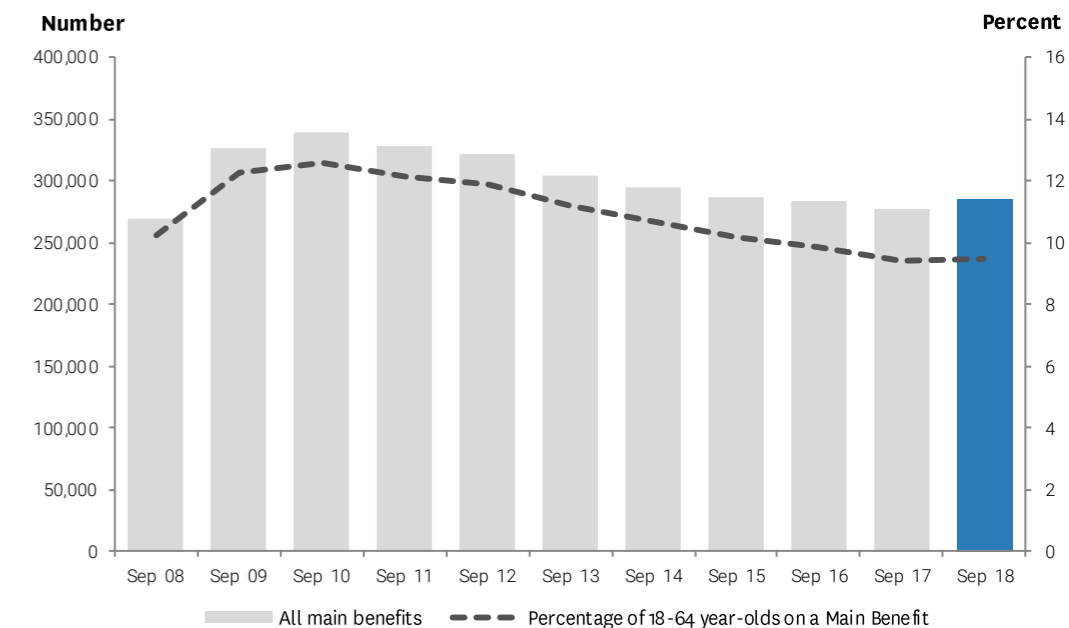
① Unless otherwise noted: quarterly numbers presented in this document are as at the end of the quarter and clients reported on are working-age (i.e. 18-64 years).



Main benefit categories and sub-categories

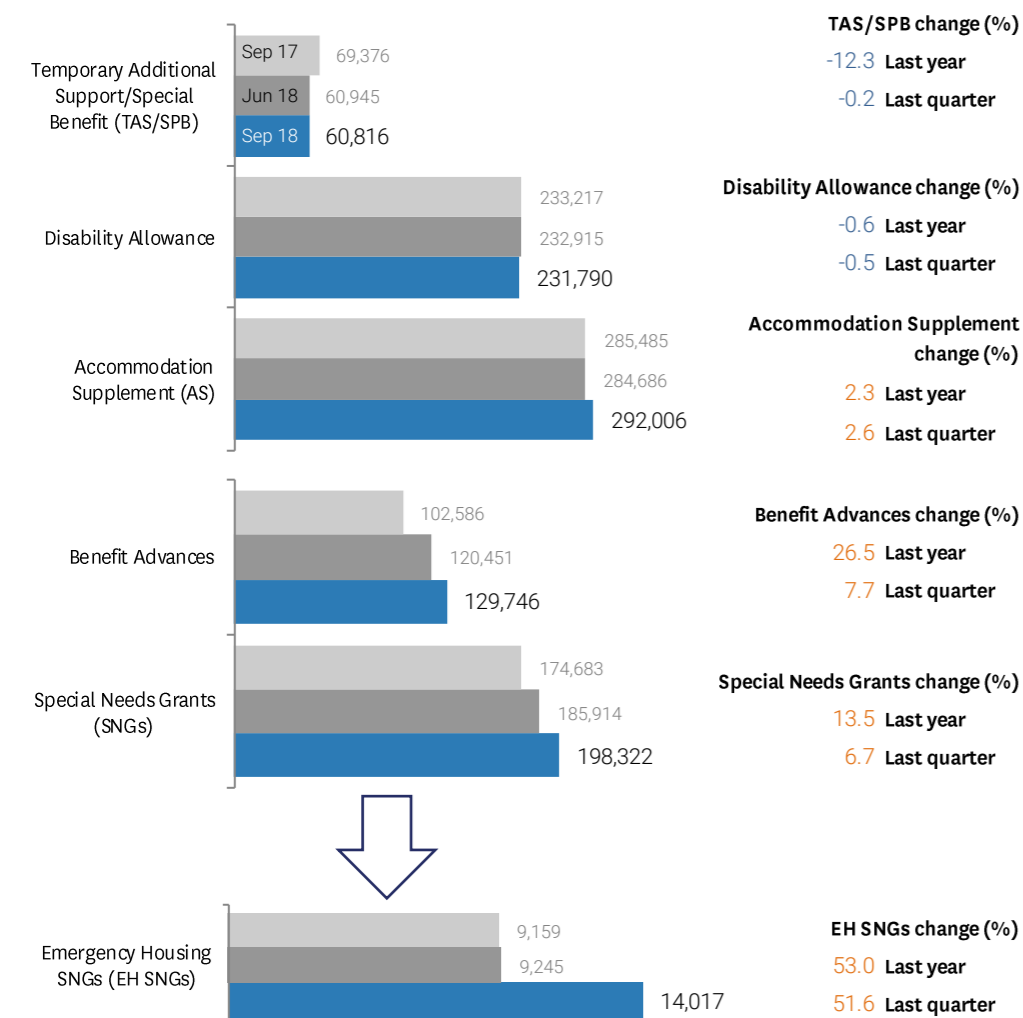
	Two-year Trend	Sep 17	Jun 18	Sep 18	Quarterly change		Year-on-year change	
					Number	Percent	Number	Percent
All main benefits		277,220	277,410	284,315	6,905	2.5	7,095	2.6
Jobseeker Support (JS)		120,726	122,513	129,643	7,130	5.8	8,917	7.4
Work Ready (JS - WR)		64,299	65,264	71,409	6,145	9.4	7,110	11.1
Health Condition or Disability (JS - HCD)		56,427	57,249	58,234	985	1.7	1,807	3.2
Sole Parent Support (SPS)		59,502	58,558	58,620	62	0.1	-882	-1.5
Supported Living Payment (SLP)		92,847	92,642	92,413	-229	-0.2	-434	-0.5
Health Condition or Disability (SLP - HCD)		84,201	84,026	83,828	-198	-0.2	-373	-0.4
Carers (SLP - Carers)		8,646	8,616	8,585	-31	-0.4	-61	-0.7
Youth Payment/Young Parent Payment		1,878	1,637	1,709	72	4.4	-169	-9.0
Youth Payment (YP)		321	189	288	99	52.4	-33	-10.3
Young Parent Payment (YPP)		1,557	1,448	1,421	-27	-1.9	-136	-8.7
Other main benefits		2,267	2,060	1,930	-130	-6.3	-337	-14.9

Main benefits over time



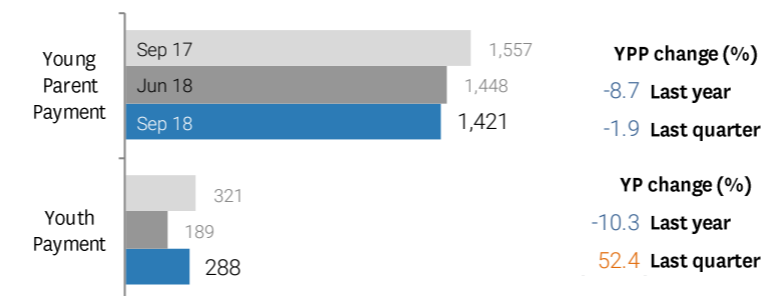
Supplementary benefits and hardship assistance

① Supplementary and hardship assistance numbers include all recipients receiving the assistance shown, not only working-age clients. Benefit Advances and Special Needs Grants are the sum of grants over the three months of the quarter (i.e. they are not at the end of the quarter).

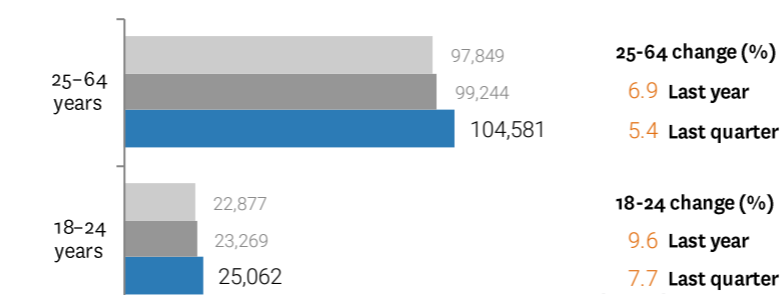


Youth

Youth Benefits (18 years and over)

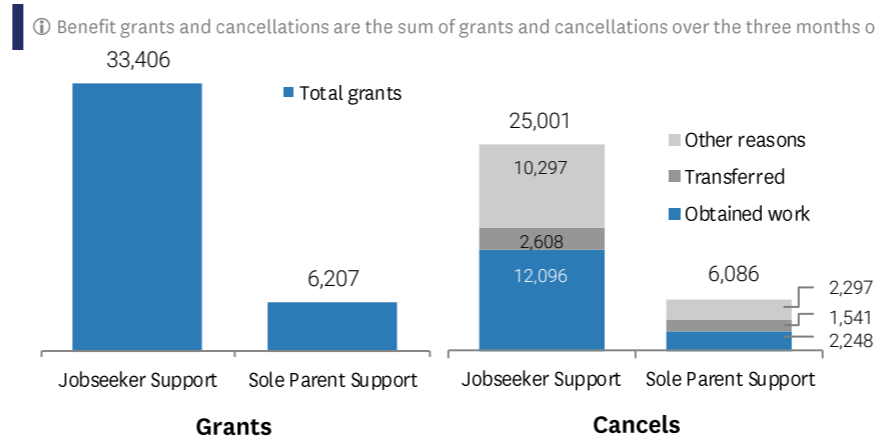


Jobseeker Support by age-group



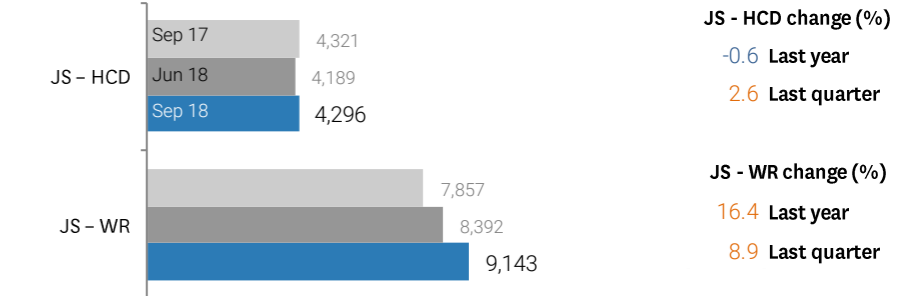
Grants and cancellations of benefits

Latest quarter

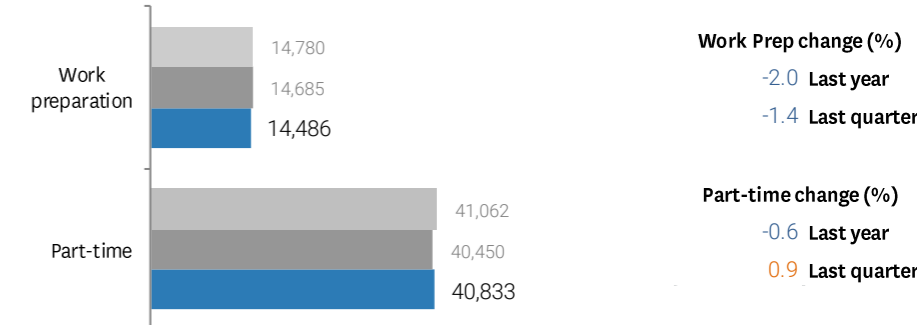


Sole parents

Sole parents receiving Jobseeker Support



Sole Parent Support by work obligation



Grants and cancellations of benefits

Comparison with previous year

