

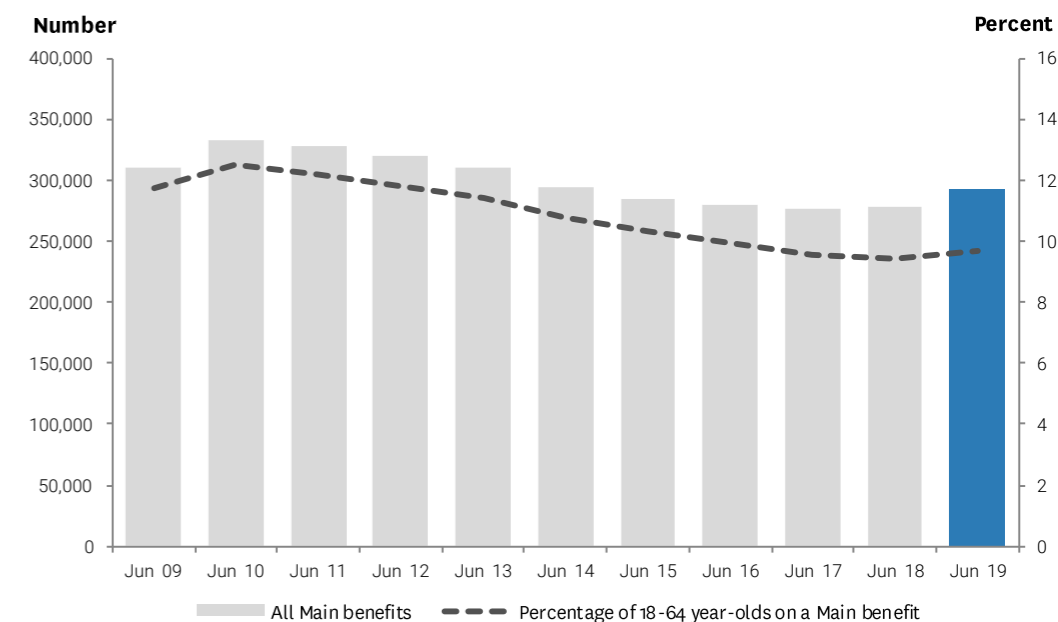
Quarterly Working-Age Benefit Numbers – June 2019

① Unless otherwise noted: quarterly numbers presented in this document are as at the end of the quarter and clients reported on are working-age (i.e. 18-64 years).

Main benefit categories and sub-categories

	Quarterly Two-year Trend			Quarterly change		Yearly change	
	Jun 18	Mar 19	Jun 19	Number	Percent	Number	Percent
All Main benefits	277,410	286,450	291,969	5,519	1.9 ▲	14,559	5.2 ▲
Jobseeker Support (JS)	122,513	131,720	136,233	4,513	3.4 ▲	13,720	11.2 ▲
Work Ready (JS - WR)	65,264	72,185	75,323	3,138	4.3 ▲	10,059	15.4 ▲
Health Condition and Disability (JS - HCD)	57,249	59,535	60,910	1,375	2.3 ▲	3,661	6.4 ▲
Sole Parent Support (SPS)	58,558	58,824	59,263	439	0.7 ▲	705	1.2 ▲
Supported Living Payment (SLP)	92,642	92,503	92,856	353	0.4 ▲	214	0.2 ▲
Health Condition and Disability (SLP - HCD)	84,026	83,992	84,266	274	0.3 ▲	240	0.3 ▲
Carers (SLP - Carers)	8,616	8,511	8,590	79	0.9 ▲	-26	-0.3 ▼
Youth Payment/Young Parent Payment	1,637	1,646	1,543	-103	-6.3 ▼	-94	-5.7 ▼
Youth Payment (YP)	189	238	180	-58	-24.4 ▼	-9	-4.8 ▼
Young Parent Payment (YPP)	1,448	1,408	1,363	-45	-3.2 ▼	-85	-5.9 ▼
Other main benefits	2,060	1,757	2,074	317	18.0 ▲	14	0.7 ▲

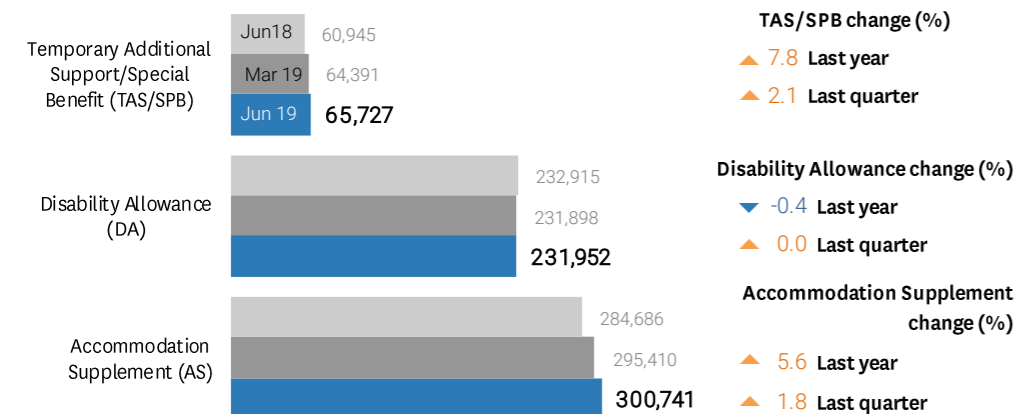
Main benefits over time



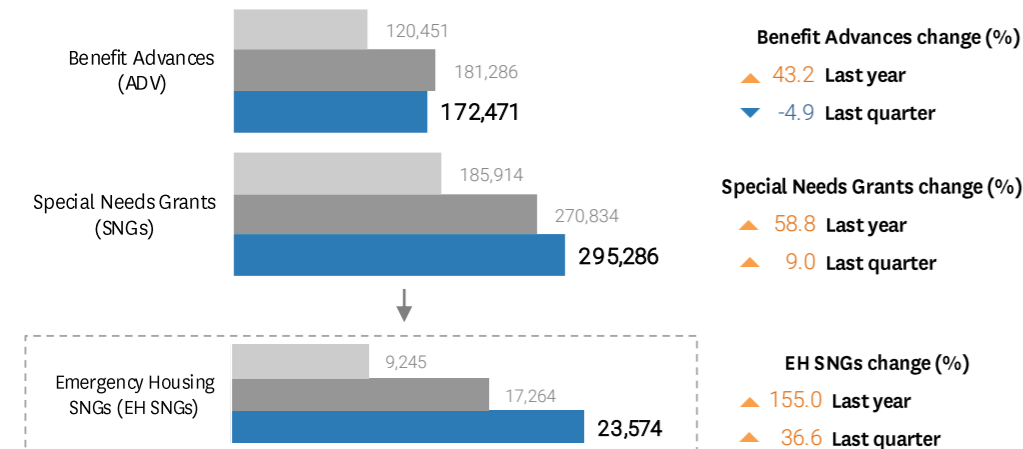
Supplementary benefits and Hardship Assistance

① Supplementary and Hardship Assistance numbers include all recipients receiving the assistance shown, not only working-age clients. Benefit Advances and Special Needs Grants (SNGs) are the sum of grants over the three months of the quarter (i.e. 1 April 2019 – 30 June 2019). The sum of Special Needs Grants also includes Emergency Housing SNGs.

Supplementary benefits



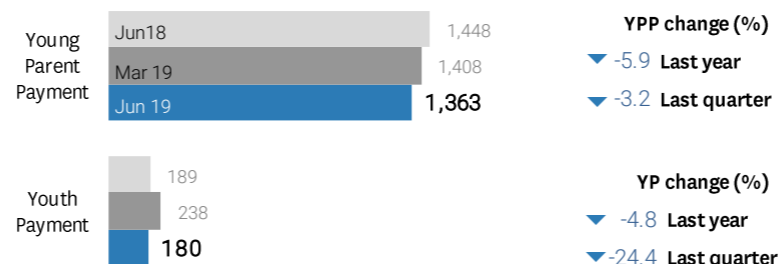
Hardship Assistance



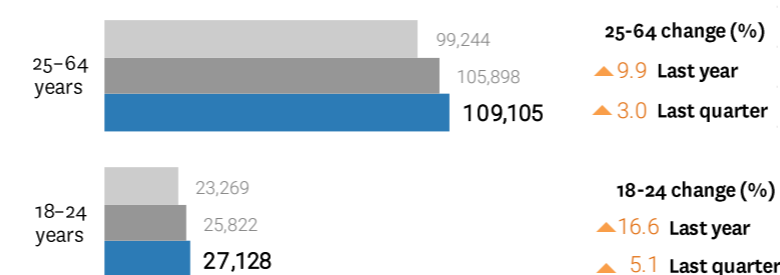
① The Special Needs Grants for Emergency Housing (EH SNGs) pays for emergency accommodation provided by emergency housing providers.

Youth

Youth Benefits (18 years to 24 years)



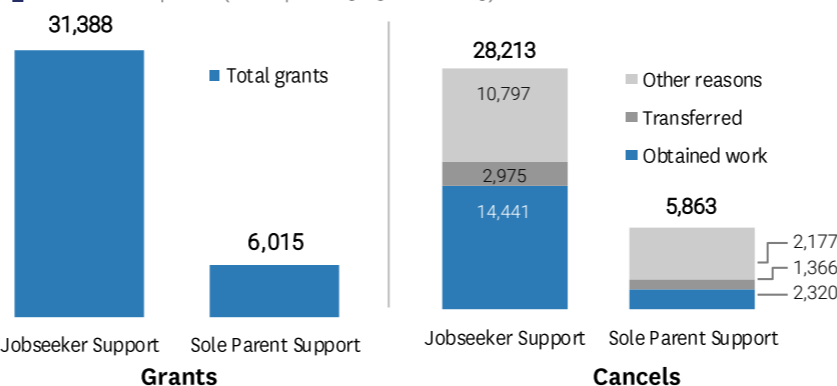
Jobseeker Support by age-group



Grants and cancellations of benefits

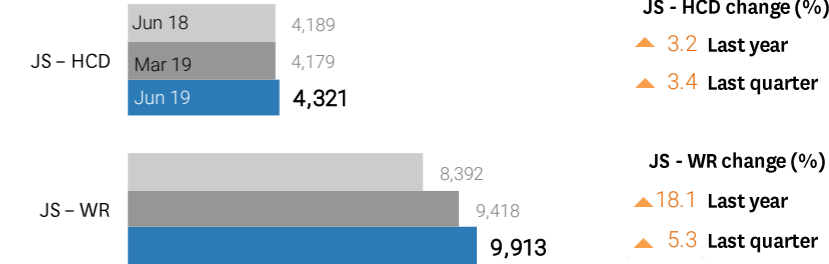
Latest quarter

① Benefit grants and cancellations are the sum of grants and cancellations over the three months of the quarter (i.e. 1 April 2019 – 30 June 2019).

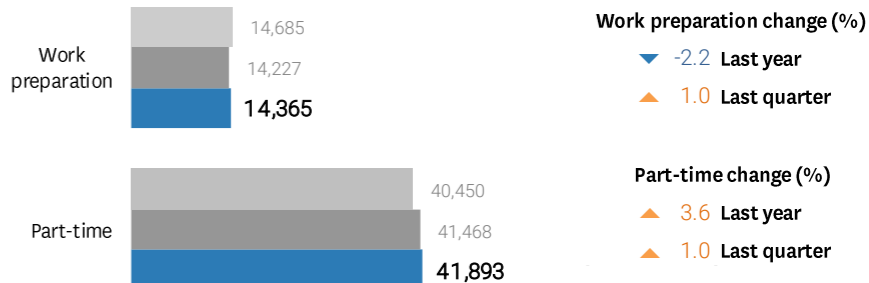


Sole parents

Sole parents receiving Jobseeker Support



Sole Parent Support by work obligation



Other main benefits

